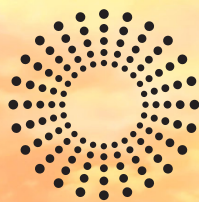


SUNDRELLA  
OUTDOOR FURNISHINGS





**SUNDRELLA**  
OUTDOOR FURNISHINGS







*Today*

The Sundrella sun rises as it has since 1956, and the outdoor furniture market has been a little brighter for it. Our company has a history of adapting, of moving forward with new styles and materials, new color trends and manufacturing techniques. In 2012, the Villella family wove a renewed purpose into the fabric of Sundrella Furniture with a promise to support American craftsmanship. As a result, we are now a 100-percent all-American manufacturer, from frames to fabrics, slings to straps, every element down to the bolts on every piece of our commercial-quality, designer aluminum furniture. We use only American-made raw materials and American labor in our 50,000+ square-foot production facility. We believe that's what has kept Sundrella burning bright, and will be that way for as long as the sun continues to shine.





★ THE





AMERICAN ★

# *Collections*

- 06 Augusta
- 10 Bay Hill
- 14 Curv
- 18 Estancia
- 22 Isleworth
- 24 Medinah
- 26 Valhalla
- 30 Accents
- 33 Materials
- 34 Swatches
- 38 Details











## AUGUSTA

There is perhaps no more versatile collection than Augusta. A delightful blend of sleek, modern lines and a contemporary take on traditional Mediterranean-style metalwork, Augusta succeeds at feeling both innovative and romantic. Whatever combination of furniture you choose, this collection is sure to add a comfortable sophistication to your space.

STYLES: SOFA, CLUB CHAIR, OTTOMAN, X-FRAME CHAISE  
FABRIC: DEEP SEATING, LINEN, CHICKADEE;  
RELAXED SLING, BLACK  
FRAME: MOJAVE, TEXTURED SILVER





*Always changeable.  
Never replaceable.*















## BAY HILL

Named after the home of one of the most exquisite golf courses in Florida, the Bay Hill collection is a classic. Sloping lines and soft contours complete this collection with a look that will last. And with a variety of seating options available in both relaxed sling and vinyl, Bay Hill can feel right at home in whatever pool-side paradise you devise.

STYLES: DINING CHAIR; LOUNGE CHAIR  
FABRIC: RELAXED SLING, LIME GREEN FX  
FRAME: SILVER  
ACCENTS: ALUMINUM TOP DINING TABLE,  
PHILLIPS STYLE; MARKET UMBRELLA







STYLES: DINING  
CHAIR; LOUNGE  
CHAIR FABRIC:  
VINYL, WHITE  
FRAME: WHITE  
ACCENTS:  
ALUMINUM TOP  
END TABLE,  
BOARDWALK  
STYLE; MARKET  
UMBRELLA





*Timeless escape into classic comfort*











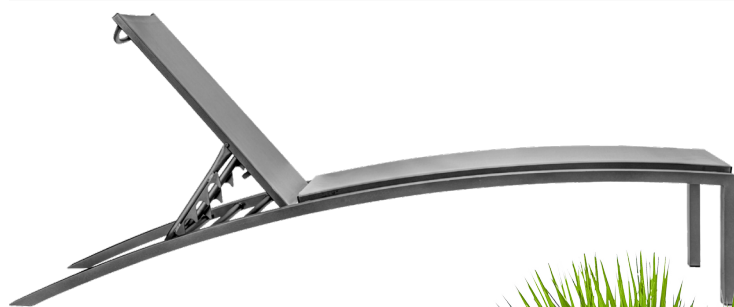
## CURV

There is no more fitting a name. The Curv collection's signature chaise lounge is a conversation piece, the ultimate marriage of form and function. Its elegant arching frame is a visual invitation to relax, to lean into the moment, while its versatile selection of fabrics and color options ensure that Curv is a showstopper in any recreation space.

STYLES: CHAISE FABRIC: SALSA FX, SLATE FRAME: BLACK; TEXTURED SILVER







STYLES: CHAISE FABRIC: BLACK; ADOBE FRAME: BLACK; TEXTURED SILVER





*Proof that  
curves can  
be edgy*



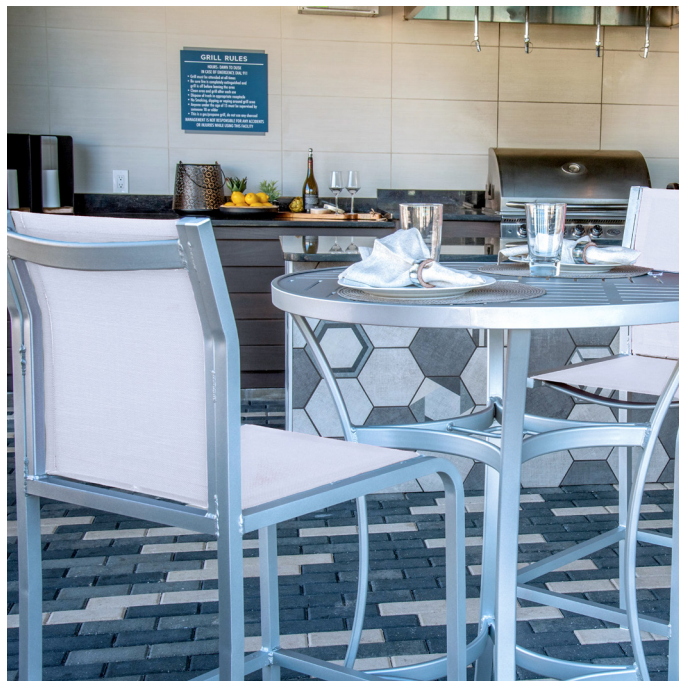




## ESTANCIA

The spanish term for a comfortable stay, Estancia invites guests to relax and feel at home. Intuitively designed with retro-modern sensibilities and style, this collection instantly elevates any outdoor patio to a chic, extended living room space.

STYLES: CLUB CHAIR, ARMLESS CHAIR, OTTOMAN, CHAISE, DINING CHAIR, BAR STOOL, DINING TABLE, COCKTAIL TABLE  
 FABRIC: GRAPHITE  
 FRAME: TEXTURED SILVER, GRAY  
 ACCENTS: ALUMINUM TOP BAR TABLE, BOARDWALK PATTERN; ALUMINUM TOP DINING TABLE, BOARDWALK PATTERN











*Uptown chic*







*made unique*





## ISLEWORTH

The Isleworth collection is an elegant jewel among the moss-draped oaks that surround it. The fluidity of its structure blends its armrests seamlessly into its own supports, reflecting itself as the lakes reflect the shore.

This collection's namesake is the luxurious golf community of Isleworth, whose natural and sophisticated Florida style is both set against and nestled into the Butler Chain of Lakes. Likewise, Isleworth chairs and lounges give off an unmistakable country club vibe, while still evoking the gentle curvature of a Central Florida landscape.

STYLES: LOUNGE CHAIR, DINING CHAIR  
FABRIC: RELAXED SLING, WHITE FX  
FRAME: BLACK











## MEDINAH

The flow of nature, captured in architecture. One continuous, gracious wave creates an air of relaxed elegance in our Medinah collection. Simultaneously flowing and reclined, this elegant collection boasts the simplicity and intrigue of today's contemporary lifestyle, where function and form are one and the same.

STYLES: CHAISE, DINING CHAIR FABRIC: TEXTURED  
STERLING FRAME: AGED BRONZE















## VALHALLA

Just as Valhalla is both a victorious afterlife in Norse mythology and a heavenly resort neighborhood in the heart of the Florida Keys, so too is this collection a melding of classical legend and coastal luxury. Its gentle, sloping angles evoke the rolling of the tides, while fanciful swirled armrests, arched stretchers, and cylindrical footing bring forth the stunning architectures from ancient times.

With its graceful blend of poised formality and contemporary comfort, the Valhalla collection will shine against any backdrop, from ivy to palm trees, from stucco to sandstone, and everything in between.

STYLES: DINING CHAIR; LOUNGE CHAIR FABRIC: TERRACE SIENNA FRAME: DARK BROWN  
ACCENTS: ALUMINUM TOP DINING TABLE, PHILLIPS PATTERN











*The outdoors is more than what's outside*





## SHADE

The umbrella is the *pièce de résistance* to any outdoor space; it's important to get it right. And fortunately, with our massive variety of adjustable umbrella shapes, sizes, styles, and color options, it's going to be pretty difficult to get it wrong. We also carry a selection of canopies and cabanas to offer guests a more intimate escape from the Florida sun.







## SUNDRELLA TABLES

Made with durable materials and delightful designs, Sundrella's signature tables make a classic combination with any of our furniture lines. With two table top materials, two patterns (Phillips, left, and Boardwalk, right), and a variety of colors to choose from, it's never been easier to match your accent table seamlessly with your décor.





# CUSTOM CUSHIONS

Sundrella offers a variety of cutomizable sizes and shapes for accent pillows, headrests, bolster pillows, or any cushion you can imagine. Each of our pillows is made with weather- and fade-resistant fabric, to ensure your cushions stay as bright and inviting as the outdoor space they decorate.

Consut a sales representative for more information.  
Custom replacement cushions also available.







## MATERIALS

At Sundrella, we know that quality begins with the process. That's why we use only the finest materials for our furniture.

On the following pages, you will find our selection of in-house color swatches to customize our aluminum frames, sling, vinyl, and more. For our deep seating selections, we place our trust in the proven quality of Sunbrella's (that's with a "b") outdoor upholstery collection. Their inventory changes frequently, so we encourage you to visit their website for a full list of deep seating swatches.





# SWATCHES

## Standard Aluminum Frame

Colored with a powdercoat. Final color may vary due to printing process. Samples available upon request.



201  
White



224  
Off-White



206  
Beige



237  
Putty



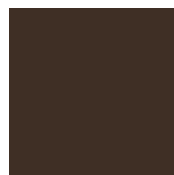
202  
Vanilla



219  
Gray



232  
Adobe



231  
Dark Brown



221  
Black



225  
Red



216  
Royal Blue



217  
Navy Blue



212  
Hunter Green

## Premium Aluminum Frame

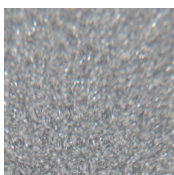
Colored with a powdercoat. Final color may vary due to printing process. Samples available upon request.



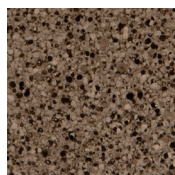
204  
Textured White



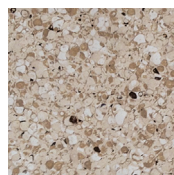
375  
Sandstone



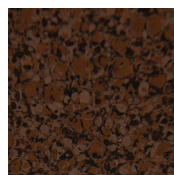
208  
Textured Silver



207  
Mocha



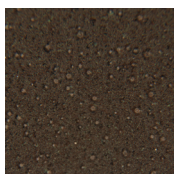
205  
Luna



362  
Mahogany



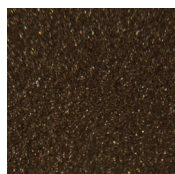
209  
Textured Storm Gray



203  
Aged Bronze



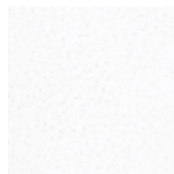
324T  
Textured Black



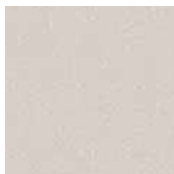
409  
Pompeian Gold

## Cast Aluminum Frame

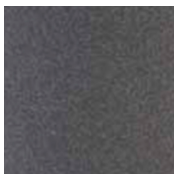
For Cast Tables, Wiltshire, Fire Pits



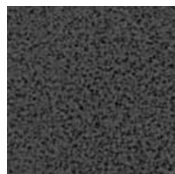
Hammered White



Sandstone



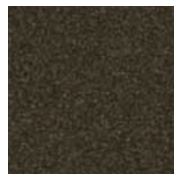
Graphite



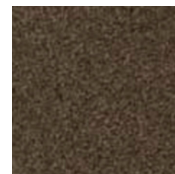
Hammered Pewter



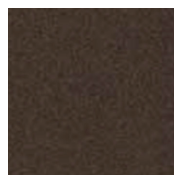
Textured Mayan Gold



Chestnut Brown



Khaki



Espresso



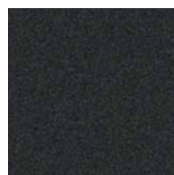
Russet



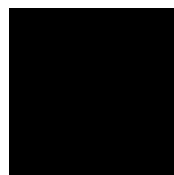
Aztec Bronze



Twilight



Textured Black



Smooth Black



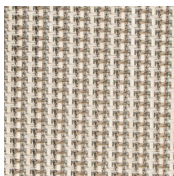


SWATCHES

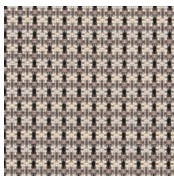


Sling Fabric

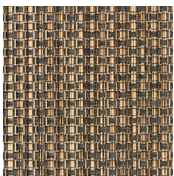
\* indicates upcharge fabric



Plata



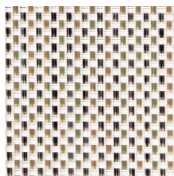
Taupe Tweed



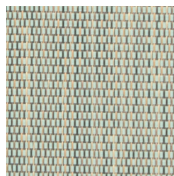
Driftwood Twist



Sisal Aluminum



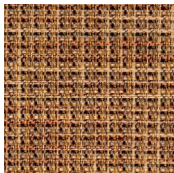
Cane Wicker Aluminum



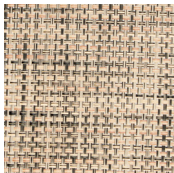
Atlantic Draft



Pria Tweed Sterling



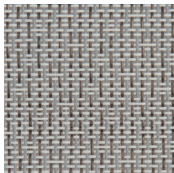
Terrace Sienna



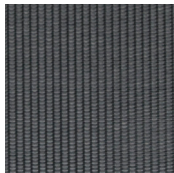
Desert



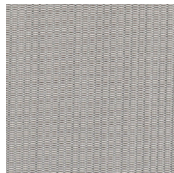
Balsa



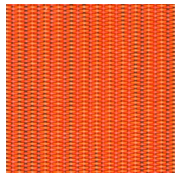
Slate



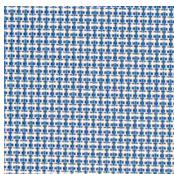
Graphite



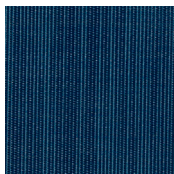
Metallica Platinum



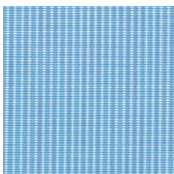
Metallica Salsa



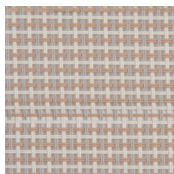
Sea Breeze



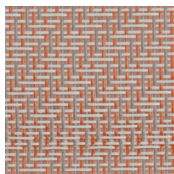
Duopione Sapphire



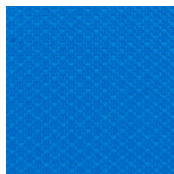
Duopione Poolside



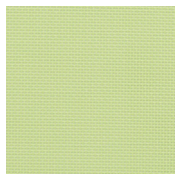
Pink Jute



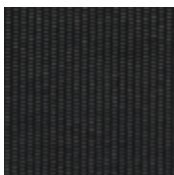
Rose Gold



Royal Blue FX



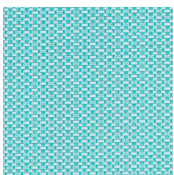
Lime Green FX



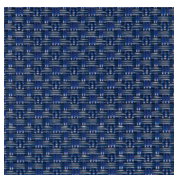
Black FX



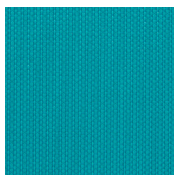
White FX



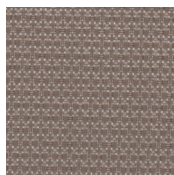
Turquoise FX



Navy FX



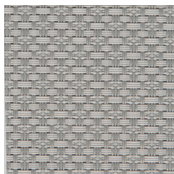
Jade Green FX



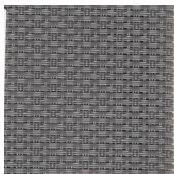
Adobe FX



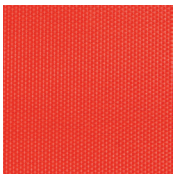
Yellow FX



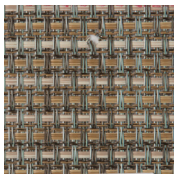
Gray FX



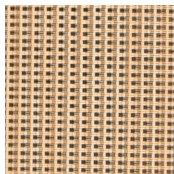
Charcoal FX



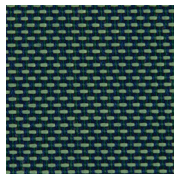
Salsa FX



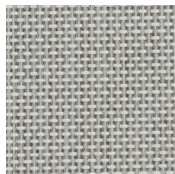
Turquesa



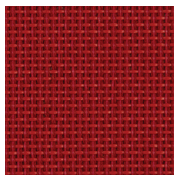
Straw Mat Cognac



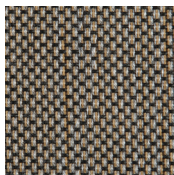
Crocodile\*



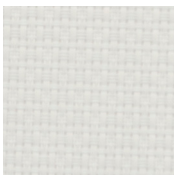
Light Gray\*



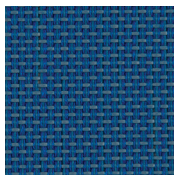
Berry\*



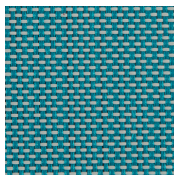
Frozen Brown\*



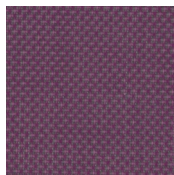
White\*



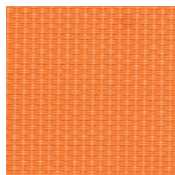
Meridian\*



Creek\*



Purple Duo\*



Orange Duo\*

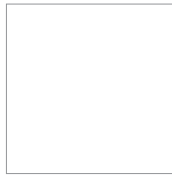




## SWATCHES

### Vinyl

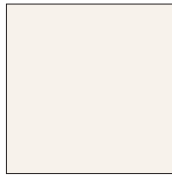
Custom logos  
available on vinyl  
straps. Final color  
may vary due to  
printing process.



**201**  
White



**202**  
Vanilla



**224**  
Off-White



**237**  
Putty



**206**  
Beige



**219**  
Gray



**232**  
Adobe



**250**  
Charcoal



**231**  
Dark Brown



**221**  
Black



**225**  
Red



**236**  
Burgundy



**209**  
Terra Cotta



**203**  
Yellow



**239**  
Mistletoe



**246**  
Holly Green



**214**  
Turquoise



**227**  
Jade Green



**212**  
Hunter Green



**249**  
Deepwater Blue



**216**  
Royal Blue



**247**  
Slate Blue



**217**  
Navy Blue







SWATCHES .....

**Awning  
Fabric**

For a full selection  
of swatches for  
our umbrellas  
and cabanas, visit  
[sunbrella.com](http://sunbrella.com)





**31202SL**  
**Relaxed Sling Chaise**  
24"W x 48"D x 3" / 48 lbs



**31502SL**  
**X-Frame Relaxed Sling Chaise**  
29"W x 77"D x 43"H  
SH 14" / 24 lbs



**31109SL**  
**Relaxed Sling Chair**  
26"W x 27"D x 38.5"H  
SH 18.5" SD 20.25" AH 26"  
16 lbs



**31402SL**  
**Relaxed Sling Bar Stool**  
22"W x 25.5"D x 48"H  
SH 30" SD 17.5" AH 38" / 11 lbs



**31302SL**  
**Relaxed Sling Beach Chair**  
25"W x 35"D x 33"H  
SH 6.5" / 11 lbs

*Details*

**MATERIALS**

Frame:  
Aluminum

Fabric:  
Relaxed Sling\*;  
Deep Seating

\*Add -P to any  
item# to upgrade  
to Padded Sling



**31309CUW**  
**Sofa**  
87.25"W x 28"D x 32"H / SH 18"



**31308CUW**  
**Love Seat**  
58.5" x 28"D x 32"H / SH 18"



**31310CUW**  
**Chair**  
29.75"W x 28"D x 32"H / SH 18"



**31311CUW**  
**Ottoman**  
28"W x 28"D / SH 18"



**31809LCUW** (LEFT ARM FACING)  
**31809RCUW** (RIGHT ARM FACING)  
**Love Seat Sectional Unit**  
57.5"W x 28"D x 32"H  
SH 18" / AH 27"



**31509CUW**  
**Center Sectional Unit**  
28"W x 28"D x 32"H / SH 18"



**31409CUW**  
**Corner Sectional Unit**  
28"W x 28"D x 32"H / SH 18"





**11203 / 11204 (HIGH-RISE)**  
**Vinyl Chaise**  
 26"W x 74.5"D x 13"/16"H  
 SH 13" / 26lbs / High-rise  
 chaise option is wheelchair  
 accessible



**11110**  
**Vinyl Dining Chair**  
 23"W x 27"D x 35"H  
 SH 17" SD 17" / 11lbs



**11402**  
**Vinyl Bar Stool**  
 23"W x 25.5"D x 45"H  
 SH 29.5" SD 22" / 18l bs.



**11302**  
**Vinyl Beach Chair**  
 23"W x 34.5"D x 33.5"H  
 SH 6.5" SD 17" / 16lbs



**11203CW**  
**Cross Weave Chaise**  
 26"W x 74.5"D x 13"H  
 SH 13" / 26lbs



**11110CW**  
**Cross Weave Chair**  
 23"W x 27"D x 35"H  
 SH 17" SD 17" / 11lbs



**11402CW**  
**Cross Weave Bar Stool**  
 23"W x 25.5"D x 45"H  
 SH 29.5" SD 22" / 18lbs



**11302CW**  
**Cross Weave Beach Chair**  
 23"W x 34.5"D x 33.5"H  
 SH 6.5" SD 17" / 16lbs



**11203SL**  
**Relaxed Sling Chaise**  
 26"W x 76"D x 13"H  
 SH 13" / 24lbs



**11110SL**  
**Relaxed Sling Chair**  
 23"W x 31.5"D x 32.5" H  
 SH 17" / SD 17" / 14lbs



**71401SL**  
**Relaxed Sling Bar Stool**  
 23"W x 31"D x 46"H  
 SH 29" / SD 18" / 18lbs



**11302SL**  
**Relaxed Sling Beach Chair**  
 23"W x 37"D x 33"H  
 SH 7.5" / SD 17" / 10lbs

## Details

### MATERIALS

Frame:  
 Aluminum

Fabric:  
 Vinyl;  
 Cross Weave;  
 Relaxed Sling\*

\*Add -P to any  
 item# to upgrade  
 to Padded Sling







**51205SL**  
**Chaise**  
28.5"W x 81.75"D x 30.25"H  
SH 13"



**51204SL**  
**Double Chaise**  
57"W x 81.75"D x 30.25"H  
SH 13"



**51109SL / 51108SL (ARMLESS)**  
**Dining Chair**  
25.75"W x 25.25"D x 35"H / SH 18"  
22.5"W x 18.75"D x 35"H / SH 18"



**51402SL / 51401SL (ARMLESS)**  
**Bar Stool**  
23.75"W x 34"D x 47"H / SH 30"  
19.25"W x 21.25"D x 47"H / SH 30"



**51302SL**  
**Beach Chair**  
25"W x 21"D x 34"H  
SH 6.5"



**51110SL**  
**Two-Seat Sling Bench**  
51"W x 25.25"D x 36"H  
SH 18"



**51309CUW**  
**Club Chair**  
29.5"W x 29.5"D x 27"H  
SH 18"



**51509CUW**  
**Armless Chair**  
29.5"W x 29.5"D x 27"H  
SH 18"



**51709CUW**  
**Ottoman**  
29.5"W x 29.5"D x 18"H



**51609LCUW (LEFT ARM FACING)**  
**51609RCUW (RIGHT ARM FACING)**  
**Chair Sectional Unit**  
29.5"W x 29.5"D x 27"H  
SH 18"

## Details

### MATERIALS

Frame:  
Aluminum

Fabric:  
Relaxed Sling\*\*,  
Deep Seating\*

\*Default Suffix ALN  
is without Umbrella  
Hold. Change to ALH  
to include Umbrella  
Hole.

\*\*Add -P to any  
item# to upgrade  
to Padded Sling



**51409CUW**  
**Corner Sectional Unit**  
29.5"W x 29.5"D x 27"H  
SH 18"



**51809CUW**  
**Curved Sectional Unit**  
41.5"W x 30.75"D x 27"H  
SH 18"



**51909CUW**  
**Curved Corner Sectional Unit**  
47"-74"W x 29.75"-30.75"D x 27"H  
SH 18"



**51910CUW**  
**Curved Ottoman Sectional Unit**  
41.5"W x 30.75"D x 18"H



**53939ALH**  
**Dining Table\***  
39"W x 39"D x 29.75"H



**53978ALN**  
**Rectangular Dining Table\***  
39"W x 78"D x 29.75"H



**52652ALN**  
**Coffee Table**  
52"W x 26"D x 17.5"H



**51818ALN (18")**  
**52626ALN (26.5")**  
**Cocktail Table**  
18/26.5"W x 18/26.5"D x 17.5"H



**533939ALN**  
**Bar-Height Table\***  
39"W x 39"D x 42"H





## CURV



**71203SL**  
**Relaxed Sling Chaise**  
28.25"W x 83"D  
SH 14" / 29lbs



**71110SL**  
**Relaxed Sling Chair**  
25.5"W x 21.75"D x 34"H  
SH 18" / AH 26.5" / 15lbs



**71401SL**  
**Relaxed Sling Bar Stool**  
23"W x 31"D x 46"H  
SH 29" AH 37.5" / 21lbs



**71301SL**  
**Relaxed Sling Beach Chair**  
23"W x 22.5"D x 26"H / 11lbs

### *Details*

#### **MATERIALS**

Frame:  
Aluminum

Fabric:  
Vinyl;  
Relaxed Sling\*

\*Add -P to any  
item# to upgrade  
to Padded Sling



**71203**  
**Vinyl Chaise**  
28.25"W x 83"D  
SH 14" / 29lbs



**71110**  
**Vinyl Chair**  
25.5"W x 21.75"D x 34"H  
SH 18" / AH 26.5" / 15lbs



**71401**  
**Vinyl Bar Stool**  
23"W x 31"D x 46"H  
SH 29" AH 37.5" / 21lbs



**71301**  
**Vinyl Beach Chair**  
23"W x 22.5"D x 26"H / 11lbs

## ISLEWORTH



**21202CW**  
**Cross-Weave Chaise**  
29"W x 78"D x 15"H / 29lbs



**21109CW**  
**Cross-Weave Chair**  
25"W x 19"D x 38"H  
SH 17" / 15lbs



**21202SL**  
**Sling Chaise**  
29"W x 78"D x 15"H / 25lbs



**21109SL**  
**Sling Chair**  
25"W x 19"D x 38"H  
SH 17" / 14lbs



**21402SL (NOT PICTURED)**  
**Sling Bar Stool**  
25"W x 19"D

## MEDINAH

### *Details*

#### **MATERIALS**

Frame:  
Aluminum

Fabric: Vinyl;  
Relaxed Sling\*

\*Add -P to any  
item# to upgrade  
to Padded Sling





..... VALHALLA

*Details*

**MATERIALS**  
Aluminum,  
Relaxed Sling\*  
\*Add -P to any  
item# to upgrade  
to Padded Sling



**61202SL**  
**Chaise**  
27"W x 78"D x 17"H / SH 17"



**61109SL**  
**Chair**  
23"W x 20"D x 38"H / SH 17"



**61402SL**  
**Bar Stool**  
23"W x 20"D x 50"H / SH 29"

..... TABLES

**Acrylic Top Tables**

\*DEFAULT SUFFIX AN IS WITHOUT HOLE / CHANGE TO SUFFIX AH TO INCLUDE UMBRELLA HOLE



**136AN (36") / 142AN (42") / 148AN (48")**  
**Round Dining Table\***  
35", 42", 48"RD x 29"H



**336AN**  
**Bar Height Dining Table\***  
42"RD x 42"H



**118AN**  
**Cocktail Table**  
18"RD x 18"H



**41824A**  
**End Table**  
24"W x 18"D x 18"H



**41838A**  
**Coffee Table**  
38"W x 18"D x 18"H

*Details*

**MATERIALS**  
Frame:  
Aluminum

**FRAME COLORS**  
See page 34

**PATTERNS (FOR ALUMINUM TOP)**  
Phillips



Boardwalk



**Aluminum Top Tables**

\*DEFAULT SUFFIX ALN IS WITHOUT HOLE / CHANGE TO SUFFIX ALH TO INCLUDE UMBRELLA HOLE



**13636ALN (36") / 14242ALN (42")**  
**Dining Table\***  
36"SQ, 42"SQ x 28"H



**136ALN (36") / 142ALN (42") / 148ALN (48")**  
**Round Dining Table\***  
36"RD, 42"RD, 48"RD x 28"H



**336ALN (36" ROUND) / 33636ALN (36" SQUARE)**  
**Bar Height Dining Table**  
36"RD, 36"SQ x 42"H



**636ALN (36") / 642ALN (42")**  
**Concave Base Dining Table\***  
36"RD, 42"RD x 28"H



**6336ALN (36") / 6342ALN (42")**  
**Bar-Height Concave Base Dining Table\***  
36"RD, 42"RD x 42"H



**14284ALN**  
**Rectangle Dining Table\***  
84"W x 42"D x 28"H



**118ALN**  
**Cocktail Table**  
18"RD x 18"H / 9lbs



**41824AL**  
**End Table**  
24"W x 18"D x 18"H



**41838AL**  
**Coffee Table**  
38"W x 18"D x 18"H







**900FMA** (6PT / .5" RIBS)  
**950FMA** (6PT / .75" RIBS)  
**900FMA-SQ** (SQUARE)  
**9' Market Umbrella**  
Six-Point or Square

**900FMA-MV** (.5" RIBS)  
**950FMA-MV** (.75" RIBS)  
**9' Middle Vent Market Umbrella**  
Six-Point



**900FMA-Z / 950FMA-Z** (MIDDLE VENT)  
**9' Zero-Edge Market Umbrella**  
Six-Point or Square / 1 or 2 Colors



**1100FMA-SQ**  
**11' Zero-Edge Market Umbrella\***  
Square / 1 or 2 Colors



**1100FMA-SQ**  
**11' Market Umbrella**  
Square / 1 or 2 Colors

**Standard Fiberglass Umbrellas**

1 OR 2 COLORS  
AVAILABLE / UP  
TO 3 COLORS  
ON MIDDLE VENT  
UMBRELLAS



**701**  
**7' Aluminum Umbrella**



**750FA**  
**7.5' Standard Umbrella**  
Eight-Point  
2 Colors (3 w/ Middle Vent)



**FL0808** (8' SQUARE)  
**FL1010** (10' SQUARE)  
**FL1212** (12' EIGHT-POINT)  
**Cabana w/ Accent Curtains**



**Lounge/Beach Cabana**

**Cabanas and More**



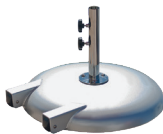
**FRBZ2-SR**  
**FRECU-IG** (GIANT/CANTILEVER)  
**In-Ground Mounts**



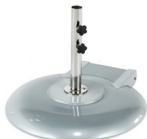
**FRG30** (100LB) / **FRG36** (150LB)  
**FRG40** (185LB)  
**Galvanized Steel Base**



**50PTD** (50LBS) / **85PTD** (85LBS)  
**FL-125 / FL-125-W** (WHEELED)  
**Powder-Coated Base**  
Painted to Match Frame/  
Filled or Unfilled



**FR100A / FR100ASR** (WHEELED)  
**Aluminum Base**  
Freestanding / Filled or Unfilled



**FR150A**  
**Aluminum Shell Base**  
With Wheels

**Umbrella Bases**

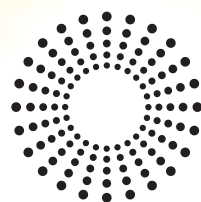


The background of the page is a photograph of a sunset over a body of water. In the foreground, several fountains are visible, with water spraying upwards and reflecting the warm colors of the sky. The sky transitions from a deep blue at the top to a bright orange and yellow near the horizon. The water in the foreground is dark, while the water further out reflects the sunset colors. The overall mood is serene and hopeful.

# *Tomorrow*

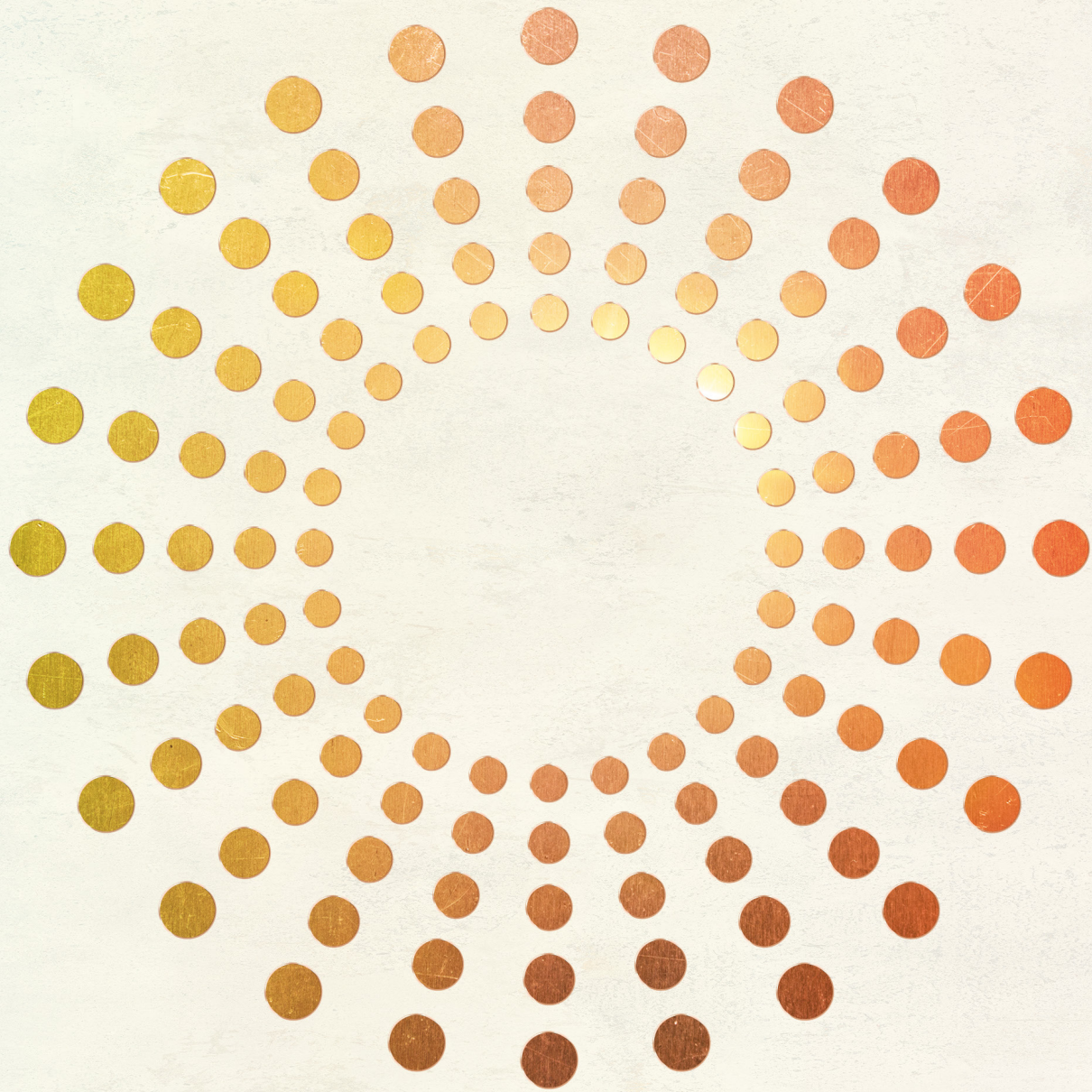
What does the future hold for Sundrella? In the same way the sun always rises, we expect the immense strides our company has made to lead us forward for years to come. Growth is not a given; it is up to us to anticipate it, to plan for it, to invite it. Like all successful companies, we know the one constant we can depend upon is change. The commercial furniture market is as unpredictable and as subject to at-a-moment's-notice shifts in trends and market pressures as any. So, it is critical that we stay vigilant, to adapt and pivot when necessary. If the past 65 years have taught us anything, it's that we can never rest on our laurels. Sundrella will always strive for beauty, comfort, and greatness, both in its products and its operations. We will always provide the most durable and affordable outdoor furniture under the sun.





**SUNDRELLA**  
OUTDOOR FURNISHINGS





800•825•5222

[sundrella.com](http://sundrella.com)